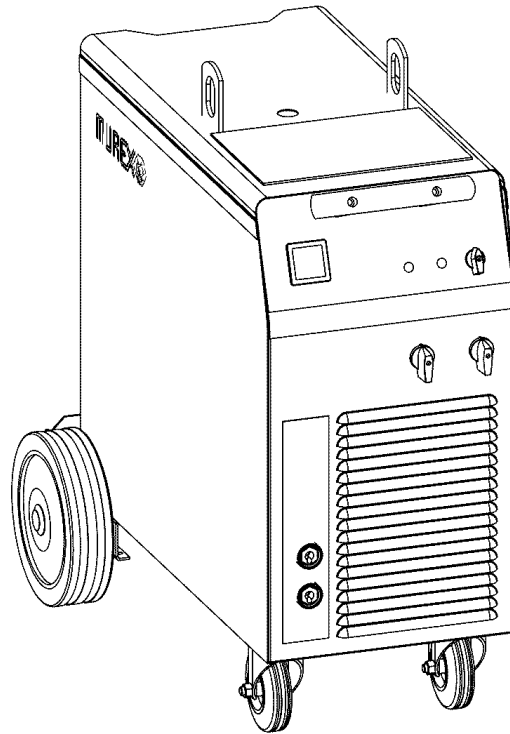


**Spare parts list**



**Valid for serial no. 448-xxx-xxxx**

**Ordering number**

0349 308 110	Challenger 400	400-415V 3~50Hz
0349 308 120	Challenger 400	400-415V 3~50Hz, with meter

Maintenance and repair work should be performed by an experienced person, and electrical work only by a trained electrician. Use only recommended spare parts.

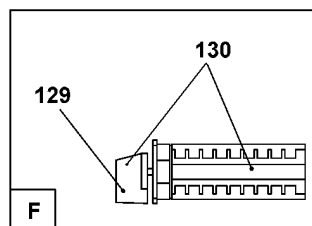
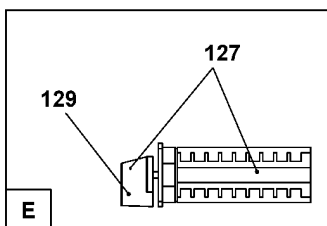
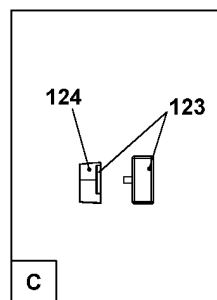
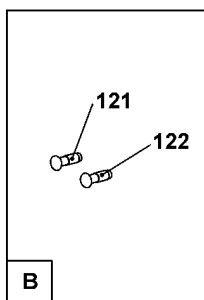
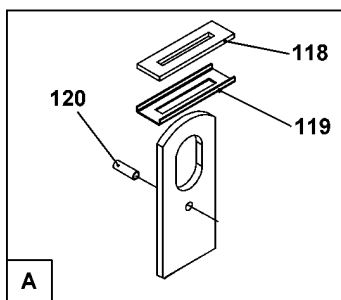
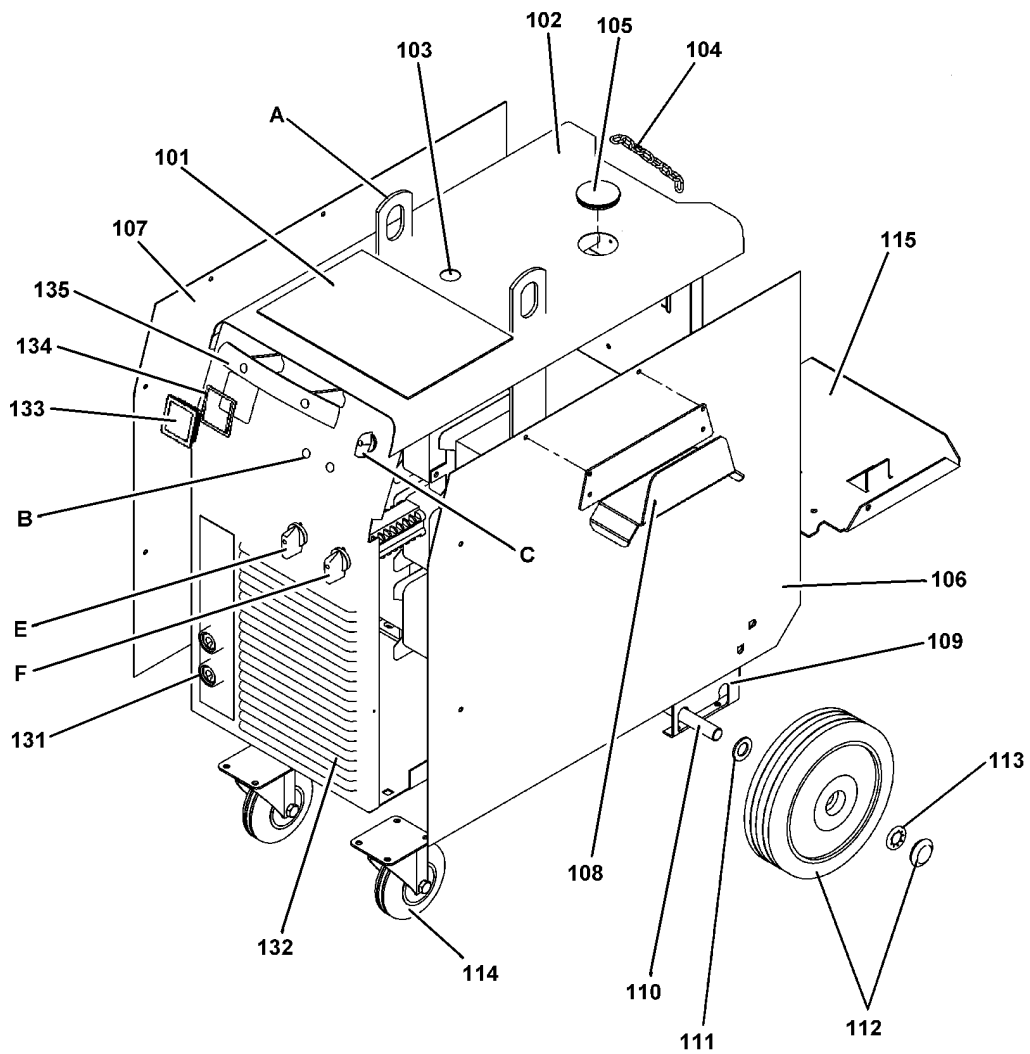
Rights reserved to alter specifications without notice.

# Challenger 400

(A) = accessory  
C = component designation in the circuit diagram

Item	Qty	Ordering no.	Denomination	Notes	C
101	1	0349 302 564	Rubber mat		
102	1	0349 306 580	Cover		
103	1		Blind plug	Ø31	
104	1	0321 173 001	Securing chain	L=700	
105	1		Blind plug	Ø66	
106	1	0349 308 106	Side panel with text	right	
107	1	0349 308 107	Side panel with text	left	
108	1	0349 303 362	Holder	(A)	
109	1	0349 302 524	Clamp		
110	1	0349 490 746	Shaft		
111	2	0215 100 037	Washer	Ø36/21x3mm	
112	2	0469 872 001	Wheel	Ø250	
113	2	0192 859 126	Locking washer		
114	2	0469 873 001	Castor wheel	Ø125mm; h=150mm	
115	1	0349 302 558	Shelf		
118	2	0468 797 001	Seal		
119	2	0468 796 001	Support plate		
120	2	0349 480 394	Roll pin		
121	1	0369 733 002	Signal lamp	orange	HL2
122	1	0369 733 007	Signal lamp	white	HL1
123	1	0349 303 552	Switch		QF1
124	1	0349 303 553	Knob		
127	1	0193 942 001	Switch		QF2
129	2	0349 302 306	Knob		
130	1	0193 945 001	Switch		QF3
131	2	0160 362 881	Cable connector OKC 50-95		XS2 XS3
132	1	0349 306 574	Front panel	With text. Only for OrigoMig 405	
133	1	0455 172 001	Glass		
134	1	0455 174 001	Seal		
135	1	0349 305 239	Handle		

# Challenger 400



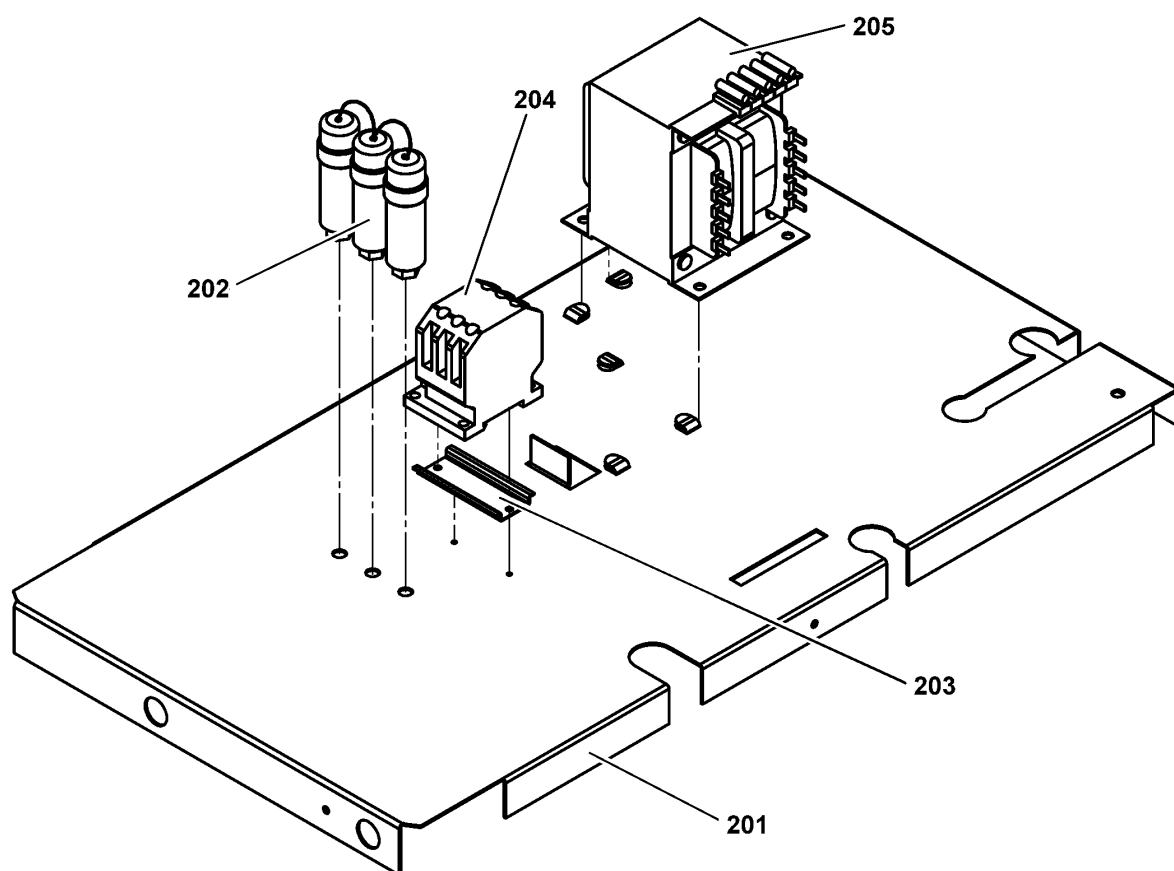
## Challenger 400

(A) = accessory

C = component designation in the circuit diagram

Item	Qty	Ordering no.	Denomination	Notes	C
201	1	0349 302 527	Intermediate plate		
202	1	0349 303 025	Filter		C1, C2, C3
203	1	0349 302 421	Rail	400-415V	
204	1	0193 297 103	Contactor	400-415V	KM1
	1	0193 503 101	Contactor	230-500V	KM1
205	1	0469 882 001	Control transformer	400-415V	TC1
	1	0455 306 001	Control transformer	230-500V	TC1

# Challenger 400



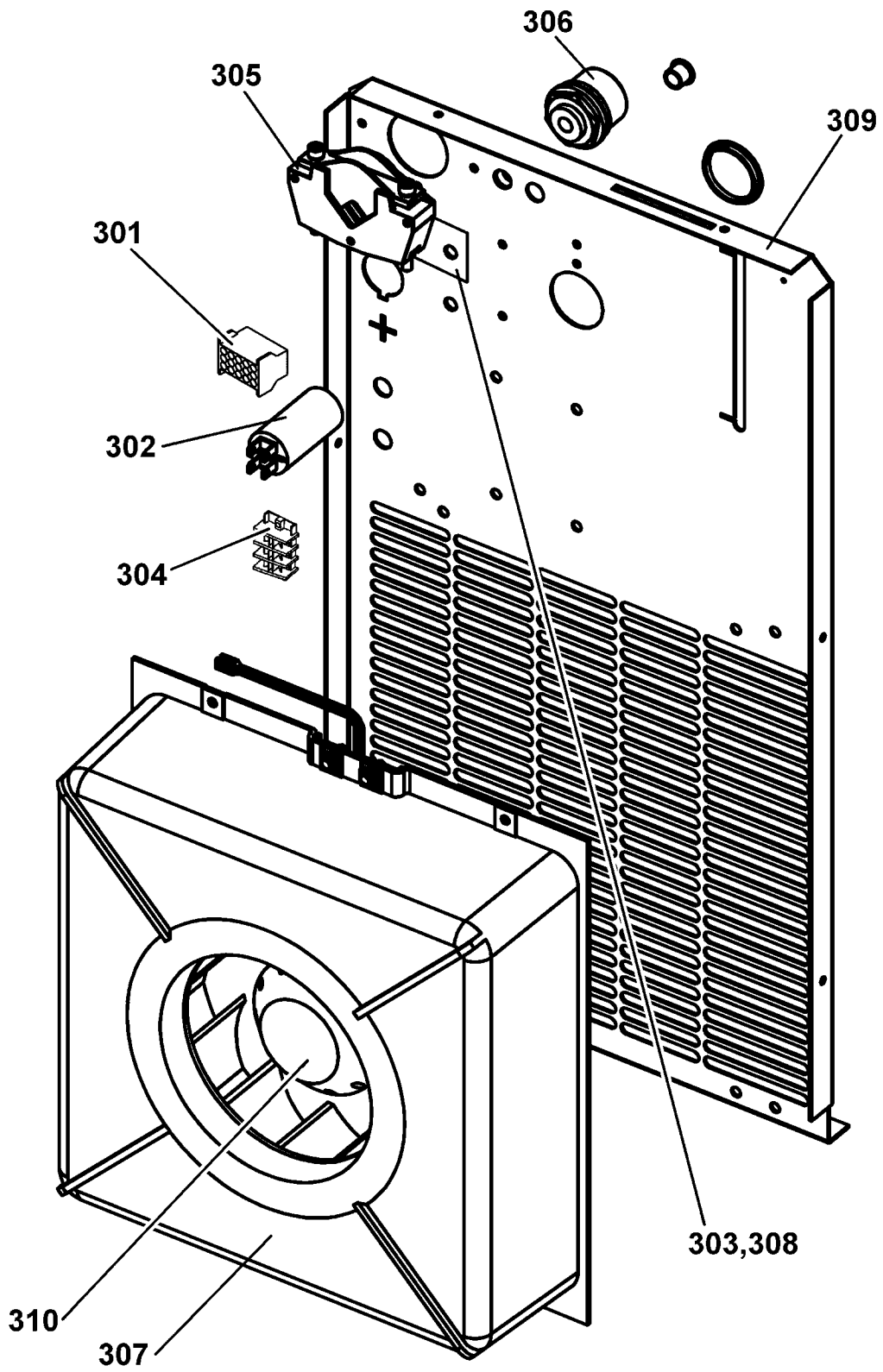
## Challenger 400

(A) = accessory

C = component designation in the circuit diagram

Item	Qty	Ordering no.	Denomination	Notes	C
301	1	0192 784 016	Sleeve plug	15 pole	XS1
302	1	0191 085 203	Capacitor	3uF 400V	C4
303	1	0349 306 590	Socket plate		
304	1	0466 884 003	Connection block	3 pole	XT1
305	1	0469 950 880	Cable inlet		
306	1	0160 362 881	Current terminal		XS5
307	1	0469 893 001	Fan housing		
308	1	0040 936 901	Clip		
309	1	0349 306 571	Rear panel		
310	1	0369 827 001	Fan		EV1

Challenger 400



## Challenger 400

(A) = accessory

C = component designation in the circuit diagram

Item	Qty	Ordering no.	Denomination	Notes	C
401	1	0349 302 523	Bottom plate	with switches	
402	1	0349 302 772	Transformer		TM1
403	1	0455 488 880	Diode bridge		V1
404	1	0349 302 778	Inductor		L1



**Challenger 400**

